



# be **MINE-** **BE MINE**

The slim magnetic stirrer for the daily laboratory routine job. Reliable stirring power in continuous operation due to inductive drive without moveable parts.

Slim, handy and colourful. Available in red, blue and green.

LED lights visualize the operation mode and the stirring speed.



Single place magnetic stirrer with inductive drive. The wear-free drive guarantees a homogeny mixture of the liquid at constant stirring speed. The control always memorizes the last setting of speed and direction. The "soft-start-function" ensures a smooth and centred start of the stirring bar.

Clear symbols on the integrated control board allow an intuitive operation of the stirrer.

The circumferential LED light visualizes the operation mode as well as stirring speed and stirring direction.

Available in three colours:  
red, blue and green

Slim and handy the Be Nine stirrer perfectly fits into the lab environment and sets a colour and light point.



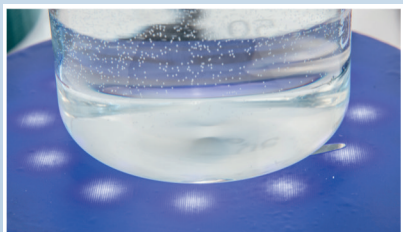
Technical data:

Dimensions:	130x195x22
Max. stirring volume:	1000 ml
Diameter stirring base:	130 mm
Power consumption:	6 W
Power output:	4 W
Voltage (mains adaptor)	230 VAC
Stirring speed, min/max.:	100/1350 rpm
Material of housing:	PLA

"Soft-start-function", stirring direction change, direct operation, with external mains adaptor

Order numbers:

Red	95.0002.001.001
Green	95.0002.001.002
Blue	95.0002.001.003



Technische Änderungen vorbehalten, Keine Haftung für Druck- und Schreibfehler



Schloss Detzel 1  
39345 Detzel Schloss/Satuelle  
Germany  
fon +49 (0)39058 - 9762-0  
fax +49 (0)39058 - 97 62-22  
[www.shp-steriltechnik.de](http://www.shp-steriltechnik.de)  
[info@shp-steriltechnik.de](mailto:info@shp-steriltechnik.de)